



Flat 5909, 10 Marsh Wall, London, E14 9TB  
£3,359



Flat 5909, 10 Marsh Wall, London, E14 9TB

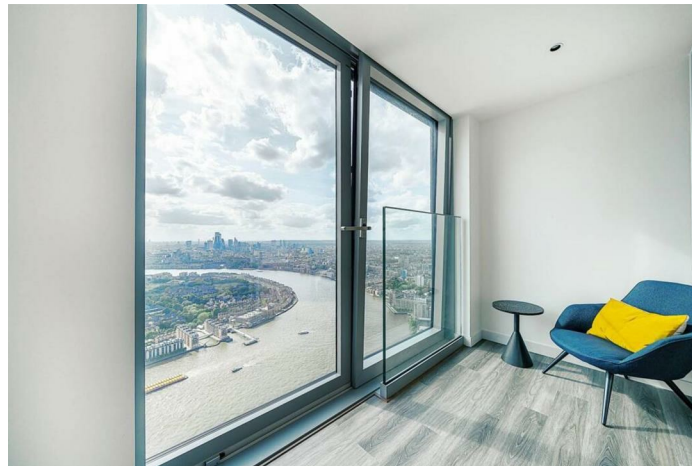
£3,359

Available End of June | Furnished | 59th Floor | Magnificent Views | Concierge | Gym | 75th Floor Roof Terrace  
| Cinema Room | Meeting Rooms | Games Room | Lounges | WeChat: CLH-Consultant.

## Description



## Situation

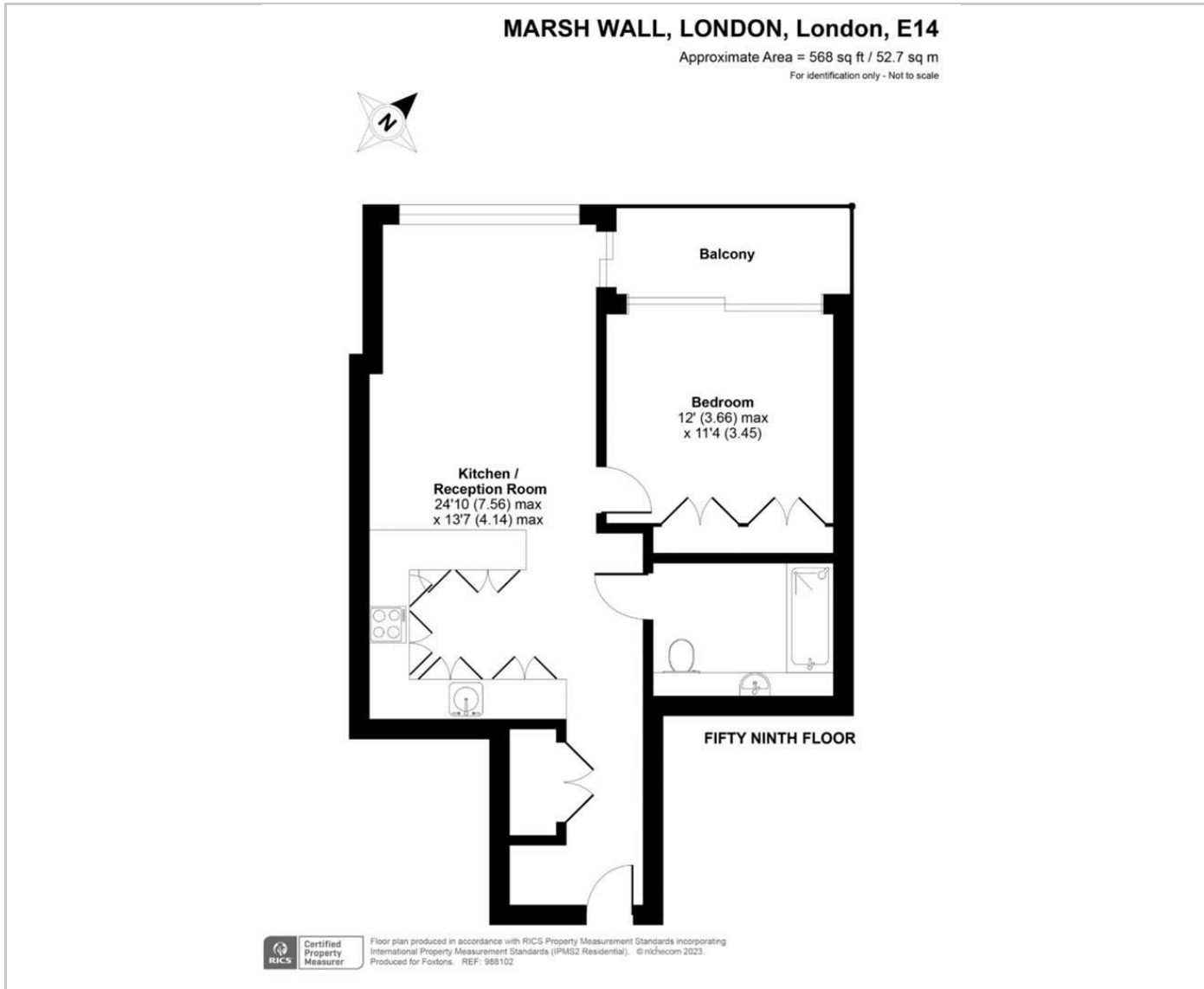


Part furnished

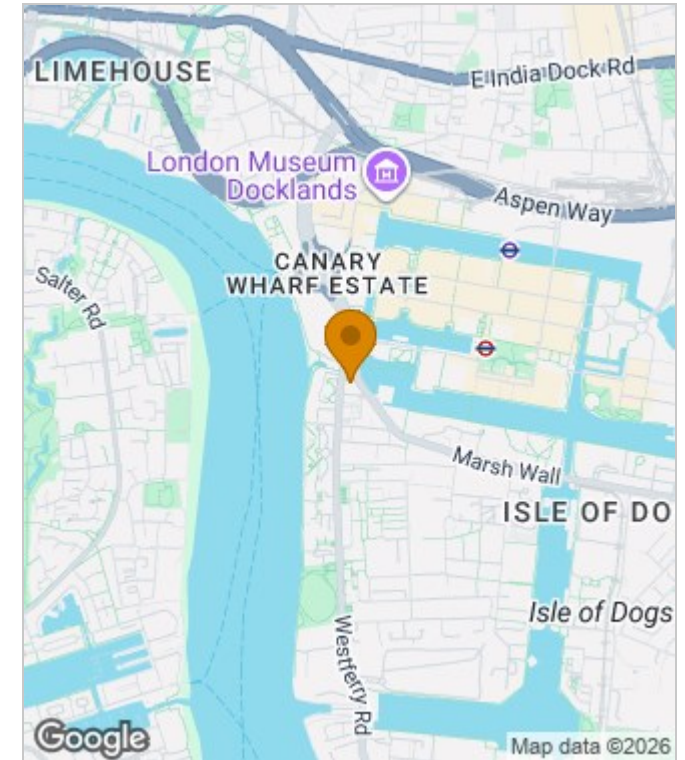
Council Tax Band: E

Available: 26th June 2026

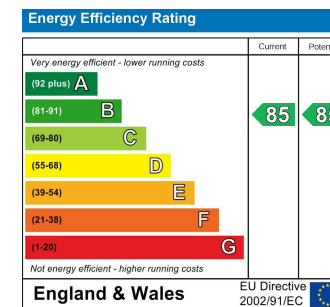
## Floor Plans



## Area Map



## Energy Performance Graph



These particulars, whilst believed to be accurate are set out as a general outline only for guidance and do not constitute any part of an offer or contract. Intending purchasers should not rely on them as statements of representation of fact, but must satisfy themselves by inspection or otherwise as to their accuracy. No person in this firm's employment has the authority to make or give any representation or warranty in respect of the property.